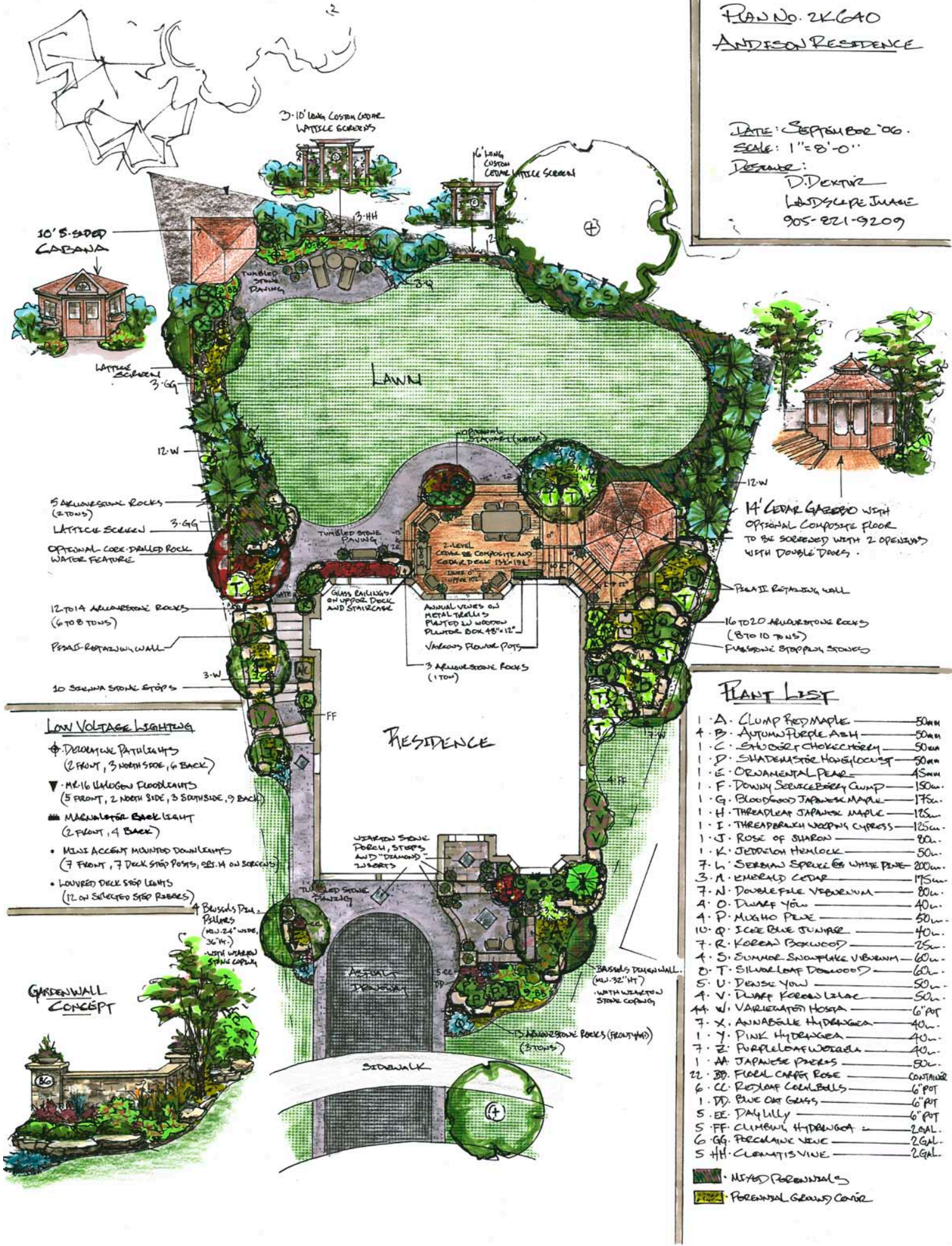


Plan No. 2K640
ANDERSON RESIDENCE

DATE: SEPTEMBER '06
SCALE: 1" = 8'-0"

DESIGNER:
D. DEXTER
LANDSCAPE JOURNAL
905-821-9209



LOW VOLTAGE LIGHTING

- ⊕ PERIMETER PATH LIGHTS (2 FRONT, 3 NORTH SIDE, 6 BACK)
- ▼ MR-16 HALOGEN FLOODLIGHTS (5 FRONT, 2 NORTH SIDE, 3 SOUTHSIDE, 9 BACK)
- MAGNOLIA BACK LIGHT (2 FRONT, 4 BACK)
- MISSISSIPPI MOUNTED DOWNLIGHTS (7 FRONT, 7 DECK STEP POSITS, 25-14 ON SCREENS)
- LOUVERED DECK STEP LIGHTS (12 ON SELECTED STEP RANGES)

GARDEN WALL CONCEPT



PLANT LIST

- | | |
|----------------------------------|-----------|
| 1. A. CLUMP RED MAPLE | 50cm |
| 1. B. AUTUMN PURPLE ASH | 50cm |
| 1. C. STUBBER CHOKERCHERRY | 50cm |
| 1. D. SHADENOTE HONEYLOCUST | 50cm |
| 1. E. ORNAMENTAL PEAR | 45cm |
| 1. F. DOWNY SERVICE BERRY CLUMP | 150cm |
| 1. G. BLOODWOOD JAPANESE MAPLE | 175cm |
| 1. H. THREADLEAF JAPANESE MAPLE | 125cm |
| 1. I. THREADLEAF WEEPING CYPRESS | 125cm |
| 1. J. ROSE OF SHARON | 80cm |
| 1. K. JEDDISON HEMLOCK | 50cm |
| 7. L. SERENA SPRUCE & WHITE PINE | 200cm |
| 3. A. EMERALD CEDAR | 175cm |
| 7. N. DOUBLE FILE VIBURNUM | 80cm |
| 4. O. DWARF YEW | 40cm |
| 4. P. MIXHO PINE | 50cm |
| 10. Q. ICEE BLUE JUNIPER | 40cm |
| 7. R. KOREAN BOXWOOD | 25cm |
| 4. S. SUMMER SNOWFLAKE VIBURNUM | 60cm |
| 0. T. SILVER LEAF DOGWOOD | 60cm |
| 5. U. DENSE YEW | 50cm |
| 4. V. DWARF KOREAN LAUREL | 50cm |
| 14. W. VARIATION HOSBA | 6" POT |
| 7. X. ANABASILE HYDRANGEA | 40cm |
| 1. Y. PINK HYDRANGEA | 40cm |
| 7. Z. PURPLE LEAF WOODRUSH | 40cm |
| 1. AA. JAPANESE PIERIS | 50cm |
| 22. BB. FLOER CANNON ROSE | CONTAINER |
| 6. CC. RED LEAF COCAL BELL | 6" POT |
| 1. DD. BLUE OAT GRASS | 6" POT |
| 5. EE. DAY LILLY | 6" POT |
| 5. FF. CLIMBING HYDRANGEA | 2 GAL. |
| 6. GG. FRECKLED NERVE | 2 GAL. |
| 5. HH. CLIMBING VINE | 2 GAL. |

- MIXED PERENNIALS
- PERENNIAL GRASSY CORNER